

The Canton E-Waste, Tire & Household Hazardous Waste
Drop Off is located at:
742 Schroyer Avenue SW, Canton (330) 430-7869



Canton E-waste, Tire & Household Hazardous Waste Drop-Off

Open to Everyone in Stark, Tuscarawas & Wayne Counties



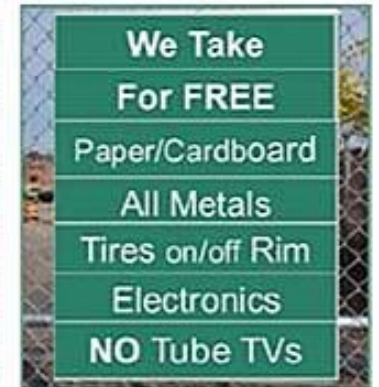
- Canton City Health Department
- Canton E-waste, Tire & Household Hazardous Waste Drop-Off

This Program is offered by the:

Canton City Health Department
Division of Environmental Health
420 Market Avenue North
Canton, Ohio 44702
(330) 489-3327
Website: www.cantonhealth.org
E-mail: info@cantonhealth.org



Public Health
Prevent. Promote. Protect.
Canton City Public Health



742 Schroyer Avenue SW, Canton

Through partnership between the Canton City Health Department and the Stark-Tuscarawas-Wayne Recycling District, we proudly bring you a location where residents can legally dispose of materials that are cluttering up their homes and properties.

There is **NO CHARGE** to drop off recyclables at our facility which is located at **742 Schroyer Avenue SW** (corner of Schroyer Ave and Melchoir SW). **Open Monday - Friday, 9:00am to 3:00pm (except for legal holidays).**

For special dates and complete lists of acceptable items, visit our website at www.cantonhealth.org.

TIRES

- 12 tires per household per year
- Car and light truck tires, **on or off the rim**
- Haul no more than 10 tires without a hauler's permit

E-WASTE

Appliances (NO Tube TVs)

Large and Small - Air Purifiers • Alarm Clocks • Blenders • Dishwashers • Dryers • Fans • Lamps • Microwaves • Mixers • Ovens • Telephones • Toasters • Toaster Ovens • Vacuum Cleaners • Washers • Refrigerators • Air Conditioners • Dehumidifiers

Audio/Video Equipment

Cable Boxes • CD Players • DVD Players • LED/Plasma/LCD TVs • Outdoor Antennas • Remote Controls • Satellite Boxes • Satellite Dishes • Stereos • Tape Decks • Turntables • Video Game Systems

Computers and Office Equipment

Answering Machines/Telephone systems • Assorted Expansion Cords/Wires • Copiers • Cash Registers • Cell Phones • Docking Stations • External Drives • Fax Machines • Ink Jet Cartridges • Keyboards/Mice • Laptops • Mainframes • Macs • Monitors (non-tube) • Pagers • PC's • PDA's • Printers • Scanners • Terminals (VDT's) • Typewriters • Word Processors

ADDITIONAL ACCEPTABLE ITEMS

Auto and Small Engines

Assorted Parts • Chainsaws • Engines • Lawn Mowers • Rototillers • Transmissions • Weed Whackers

Batteries

Automotive • Cell Phone • Laptop • Lithium • NiCad • Notebook • UPS Systems

Cardboard Box/Materials

Books (hard & soft cover) • Cardboard Boxes • Corrugated Cardboard • Junk Mail • Magazines • Newspapers (including ads) • Office Paper • Telephone Books

Metals

Aluminum Cans • Aluminum Siding • Bed Frames • Coat Racks • Chairs • Filing Cabinets • Fire Extinguishers • Lockers • Hangers • Oxygen Tanks • Propane Tanks • Steel Cans • Tables • Furnaces • Screen Doors • Space Heaters • Steel Pipes • Storm Doors • Water Heaters • Various Other Metals

Miscellaneous

Artificial Christmas Trees • Christmas Lights

Plastics

Assorted Plastics #1 - #7

Wire and Cable

AC/DC Adapters • Extension Cords • Jumper Cables • Phone Cable • Power Strips • Speaker Wire • Steel Cable

HOUSEHOLD HAZARDOUS WASTE **Appointments Required - Call (330) 430-7869**

Acceptable waste includes all hazardous wastes generated from a household: Flammable liquids, Aerosols, Pesticides, Insecticides, Herbicides, Fungicides, Oil base paint, Corrosive Liquids, Automotive Fluids, items that contain Mercury and Fluorescent Bulbs.

UNACCEPTABLE waste includes: Latex paint, explosives, smoke detectors, DEA regulated material and bio-medical waste.

NO Commercial/Business waste permitted.