

EPI Gram is a monthly publication of the Stark County Public Health Coalition. It contains a summary of provisional communicable disease reports and other key public health indicators, with summary tables for Stark County, Ohio. Some reportable conditions may be under investigation, and at any given time data may fluctuate from month to month for a specific category.

IN THE NEWS:

Nationally: Vaccine Prioritization (excerpt from <http://www.pandemicflu.gov/vaccine/index.html#vprioritization>)

PLEASE provide comments regarding the following information: The federal government has initiated a process to provide guidance to assist in defining groups that should be considered for priority access to scarce vaccine. Accordingly, the Department of Health and Human Services (HHS) requests input from the public (the term public applies to among other entities the private medical community) on considerations in developing guidance for prioritization of the distribution and administration of both pre-pandemic and pandemic influenza vaccines based on various pandemic severity and vaccine supply scenarios. Follow this link for more detailed information, including instructions on how to submit comments. [Request for Information \(RFI\): Guidance for Prioritization of Pre-pandemic and Pandemic Influenza Vaccine](#)

Statewide: Influenza and Norovirus

Influenza: Ohio's influenza activity is at "sporadic" for the week ending 16 December. There are 3 influenza isolates at ODH Lab. They are: Influenza A, H3; and 2 Influenza A, H1 N1 (both are in the vaccine). During this same time period there was one reported influenza-associated **pediatric death** of a 16 month old baby in Hamilton County. The baby was not vaccinated.

Norovirus: Norovirus activity is increasing across the state. Ten outbreaks of suspected Norovirus have been reported with onset in the past two weeks, mostly from central and northeastern Ohio. Outbreaks in long term care facilities, schools and the foodborne setting predominate.

Locally: Influenza

Influenza season is on our doorstep. In November there was no laboratory or medically reported case of Influenza in Stark County. Currently, we have 9 cases reported by local laboratories. Of reports that included age, the two largest affected age groups are 10 and under and 35-45 year olds. In addition, school reports indicate a similar increase in illnesses due to Influenza-Like-Illness (ILI).

Number of Laboratory Influenza Reports
by week in Stark County, 2006-2007

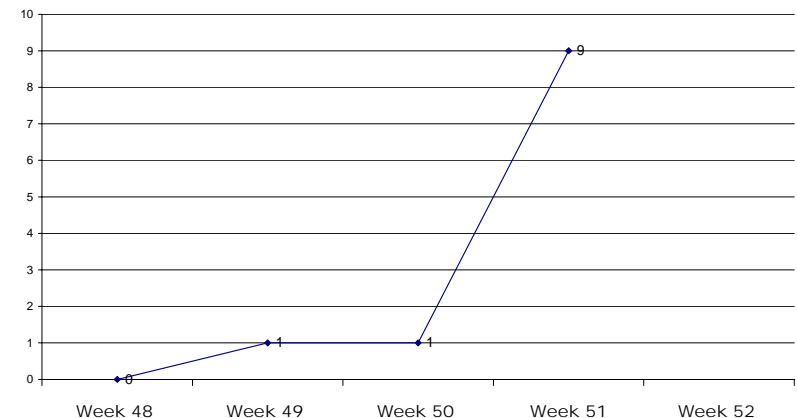


Table 1 Summary of Air Quality Index, Pollen, and Mold Counts for Stark County, Ohio, including limited historical data.

	November 2006				December 2005			
	Monthly High	Monthly Low	Monthly Mean	Counts in highest reported health risk category	Monthly High	Monthly Low	Monthly Mean	Counts in highest reported health risk category
Pollen Count	Suspended for season							
Mold Count	Suspended for season							
Air Quality Index	61	9	28	1 Moderate	60	11	27	1 Moderate

Pollen and Mold counts are derived from rotorod samples on the 2nd story roof of Canton City Hall. The readings are taken from a 24 hour period/24 hour avg. on all work days. Mold counts of 6,500-12,999 are moderate and many individuals sensitive to molds may experience symptoms, counts of 13,000 to 49,999 are high and most individuals with any sensitivity to molds will experience symptoms. The Air Quality Index (AQI) is derived by comparison to EPA standards from the following readings: Particulate Matter 10, Particulate Matter 2.5 continuous on CCHD 2nd floor roof top; Sulfur Dioxide at Malone College; and ozone monitors in Canton, Brewster, Alliance, and Middlebranch. This index is produced from March to October. AQI ratings are 151-200: unhealthy (UH); 101-150: unhealthy for sensitive groups (UH sg); 51-100: moderate (M); 0-50: good (g).

Table 2 Summary of Select Vital Statistics for Stark County, Ohio

	Nov 2006	YTD 2006	2005
Live Births	439	4338	4574
Births to Teens	54	363	508
Deaths	284	3660	4305

Table 3 Stark County Crude Birth and Death Rates

Crude rates are based on US Census 2000 Stark County population of 377,438.

	2002	2003	2004	2005
Birth	0.0127	0.0126	0.0124	0.0121
Death	0.0109	0.0111	0.0104	0.0114

Table 4 – Summary of Select Reportable Diseases for October 2006 in Stark County, Ohio (provisional data only)

Refer to “Case Definitions for Infectious Conditions Under Public Health Surveillance,” MMWR (Morbidity and Mortality Weekly Report) 1997; 46 (No. RR-10), the Ohio Department of Health Infectious Disease Control Manual or visit www.cdc.gov/epo/dphsi/casedef/index.htm for case definitions.

This report includes confirmed, probable and suspect cases.

	Alliance City			Canton City			Massillon City			Stark County			Stark County Totals			
	Nov 2006	YTD 2006	YTD 2005	Nov 2006	YTD 2006	YTD 2005	Nov 2006	YTD 2006	YTD 2005	Nov 2006	YTD 2006	YTD 2005	Nov 2006	YTD 2006	YTD 2005	5 Year annual average
Amebiasis													0	0	0	0.4
Campylobacteriosis	0	1	2	1	12	14	0	4	2	0	31	26	1	48	44	51.6
Chlamydia	6	74		41	605		1	53		14	365		62	1097		1217
Creutzfeldt-Jakob Ds													0	0	0	0.6
Cryptosporidiosis			2	0	6	2	1	1		2	11	4	3	18	8	11.6
E Coli 0157				0	1					0	1		0	2	0	2.4
E Coli	0	1	2							0	1	1	0	2	3	2.4
Enceph., WNV				0	1	1				1	3		1	4	1	3
Enceph., Other	0	1	1							0	1		0	2	1	3.2
Giardiasis	0	2	9	0	9	12	0	1	4	0	24	23	0	36	48	53
Gonorrhea	1	26		31	389		3	24		2	104		37	543		506
Haemo. Influz., Bac				1	2	5				0	2	2	1	4	7	5.6
Hepatitis A	0	1					0	1		0	2	2	0	4	2	9.2
Hepatitis B*	0	3	6		17	22			1	2	20	18	2	40	47	37.4
Hepatitis C*	0	17	26	6	103	129	1	8	31	8	97	84	15	225	270	281
Kawasaki Syndrome			1							1	1	1	1	1	2	3.4
Legionellosis				0	1	6	0	1	1	0	6	10	0	8	17	11.4
Listeriosis	0	1	1	0	2	1				0	1		0	4	2	1.6
Lyme Disease										0	2	3	0	2	3	3.2
Malaria													0	0	0	1
Meningitis, Asep	0	6	13	0	15	3	0	4		3	17	32	3	42	48	58
Meningitis Bac.										0	1	3	0	1	3	4.4
Meningococcal Dis.				0	1				1			2	0	1	3	2.8
Mumps										0	1		0	1	0	0
Pertussis			8			14	1	1	3	0	8	26	1	9	51	16.4
Salmonellosis	1	4		1	12	7	0	7	3	4	25	24	6	48	34	48.4
Shigellosis										0	2	5	0	2	5	12.4
Strep Inv A GAS	0	3	2	0	3	3				0	2	5	0	8	10	10.6
Strep B Newborn				0	1	2	0	1		0	1		0	3	2	1.8
Strep Pneu ISP	0	7	7	0	21	19			4	3	23	28	3	51	58	36
Strep TSS													0	0	0	0.6
Syphilis	0	2		1	3					1	13		2	18		32
Typhoid Fever										0	1		0	1	0	0.2
Varicella***	6	26		7	47		1	9		5	173		19	255	0	0
Vibriosis													0	0	0	0.2
Yersinosis	1	2											1	2	0	0.8

*This includes all hepatitis reports; acute, chronic, and status not known. **Incomplete 5 yr average due to a change in reporting. ***Newly reportable condition.

If you have any questions, including how to receive copies of this report, please contact Karen Schanz at (330) 493-9928 x287 or Schanzk@starkhealth.org or Christina Henning at (330) 489-3454 or Chenning@cantonhealth.org.